



HOWDEN-LE-WEAR
IS A COUNTY DURHAM VILLAGE IN THE NORTH EAST
OF ENGLAND SITUATED IN THE BEECHBURN VALLEY
ON THE A689 ROAD BETWEEN BISHOP AUCKLAND
AND CROOK TOWN



HOWDEN-LE-WEAR BOARD SCHOOL IN HARGILL ROAD c.1900 - NOW THE VILLAGE COMMUNITY CENTRE WITH HISTORY SOCIETY ROOM



OLD BRIDGE CROSSING THE BEECHBURN - NOW THE MAIN A689 ROAD WITH A MODERN BRIDGE TO
COPE WITH 21st CENTURY TRAFFIC - BRIDGEFIELD HOUSE ON THE RIGHT c. 1920



BRIDGE STREET, HOWDEN-LE-WEAR

BRIDGE STREET, ONCE THE MAIN SHOPPING STREET OF HOWDEN,
WITH THE PRIMITIVE METHODIST CHAPEL ON THE LEFT



BRIDGE STREET WITH GIBSON'S SHOP AND CARPENTER'S WORKSHOP ON THE RIGHT



INTERESTING VILLAGE SHOPS,
NO LONGER TRADING



THE WESLEYAN CHAPEL IN HIGH STREET

This building was opened in 1868 and closed in 1975 when it was sold to the North East Theatre Organ Association to house their magnificent Wurlitzer Organ.
Regular recitals and concerts are now held here at the New Victoria Centre



HIGH STREET IN THE 1920s. FOREGROUND SHOP WAS 'GRANNY' PARKIN'S THEN STOREY'S, HARRY WAGGOTT'S. PEART'S AND IS NOW THE VILLAGE SPAR SHOP AND POST OFFICE
The original Post Office is in the distance close to the telephone pole



HIGH STREET, HOWDEN-LE-WEAR

HIGH STREET BEFORE FOUR HOUSES (ON RIGHT) WERE DEMOLISHED TO EASE THE CORNER TO NEW ROAD AND CROOK



HOLLY TERRACE



SURTEES HOTEL & VALLEY TERRACE
WITH BEECHBURN COLLIERY COMPLEX IN THE FAR DISTANCE



DENEBRIDGE CROSSING OVER THE BEECHBURN BECK AT THE BOTTOM OF RUMBY HILL BANK.
Plantation Terrace is over the bridge on the left Jubilee Park on the right.



JUNCTION OF HARGILL ROAD. AUSTRALIAN HOTEL AND CORNER SHOP WITH OLD BUTCHER'S SHOP
AT NUMBER 36 RECENTLY CHANGED TO A PRIVATE DWELLING HOUSE
Driver of the Model T Ford has no trouble stopping over the junction for a chat in 1925



HARGILL ROAD EARLY 1900s



HARGILL ROAD WITH THE ORIGINAL HARGILL FARMHOUSE ON THE RIGHT



THE PLANTATION INN FROM DENEBRIDGE c.1958



GREEN TREE HOTEL WITH ASSEMBY HALL AND 'GREEN' CRAB APPLE TREE c.1964



CHURCH STREET, HOWDEN-LE-WEAR
CHURCH STREET WITH St MARY'S CHURCH IN THE DISTANCE AND CORNER SHOP, ONCE A LIBRARY, HAIRDRESSER'S, BETTING SHOP, GROCER'S AND NOW GENERAL DEALER/OFF LICENCE



THE COUNCIL STEAM ROLLER WORKING AT THE TOP OF BRIDGE STREET



'DOWN' PLATFORM TO CROOK AND BEYOND. STATION MASTER'S HOUSE WAS DESIGNATED J2 BY THE STOCKTON & DARLINGTON RAILWAY Co. The railway station name is possibly unique, combining two former station names. Sidings to the rear of the house served West Beechburn Colliery at Hargill



THE STATION AND STATION ROAD, HOWDEN-LE-WEAR

HOWDEN RAILWAY STATION LAYOUT WITH STATION ROAD AND BRITISH WORKMEN'S HALL ON THE RIGHT The station was the start of a steep climb up to Crook. The footbridge is now exhibited at Beamish Museum



HOWDEN STATION SHORTLY AFTER CLOSURE IN JULY 1965

The tracks up to the station house were used for storing redundant rolling stock for a while and the footbridge in the foreground taken to Beamish Museum



STEEP GRADIENT TO CROOK PASSED THROUGH THIS DEEP CUTTING
All now infilled and reclaimed by DCC The fine stone bridge carried Bridge Street traffic over the tracks.
Railway Street on the left



NORTH BITCHBURN COLLIERY COMPLEX LOOKING DOWN THE 'NAXIE' FROM NORTH BEECHBURN



WORKERS OUTSIDE ONE OF THE COAL FIRED KILNS AT BITCHBURN COLLIERY PIPEYARD
Jardinière plant pots were a popular sideline



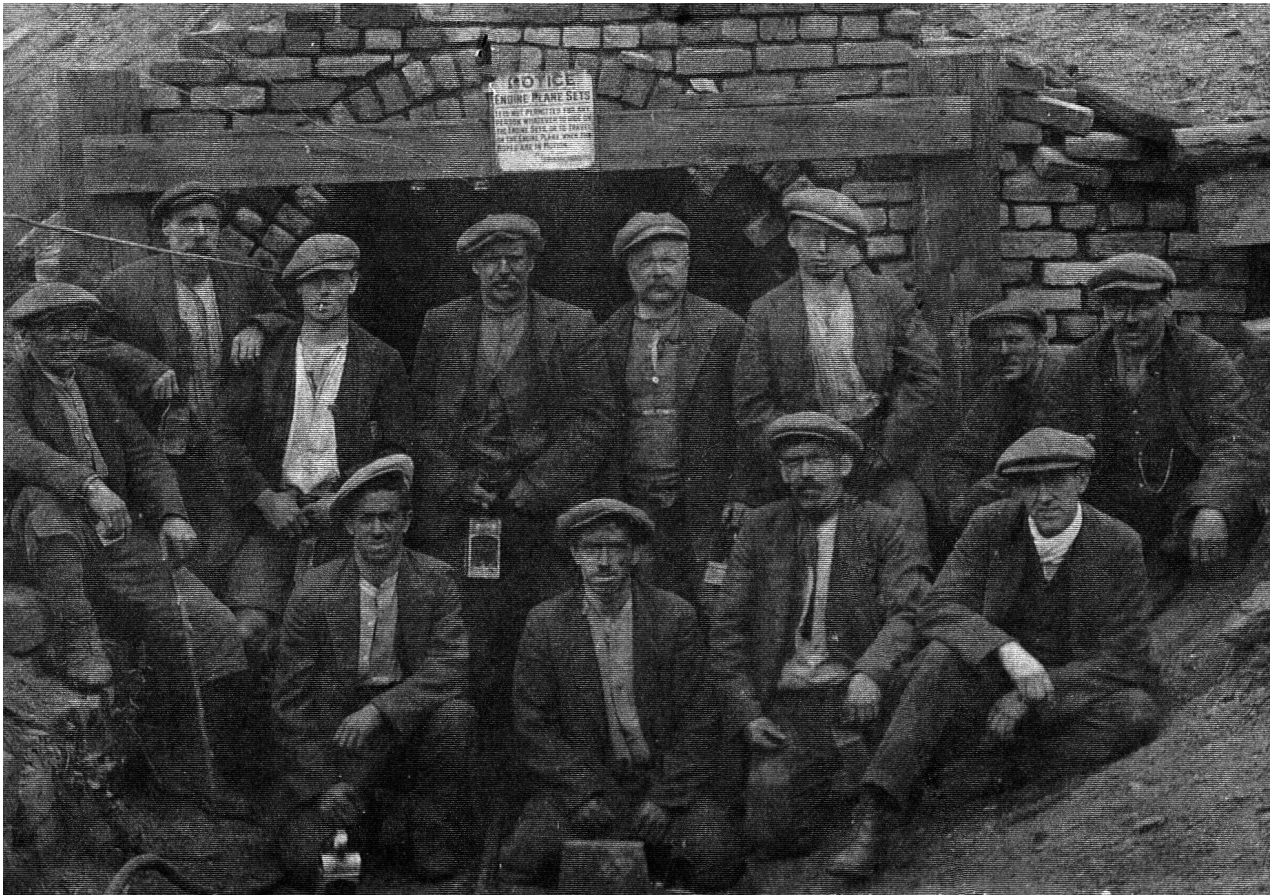
BRICKYARD WORKMEN c.1950s

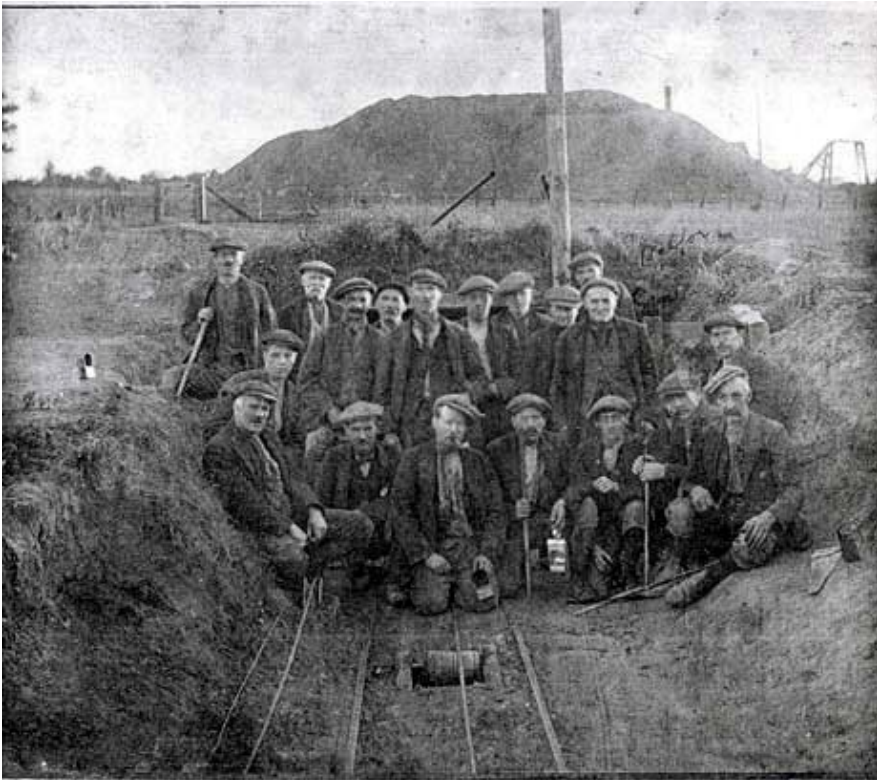
SALT GLAZED SANITARY PIPES, BRICKS AND OTHER FIRECLAY PRODUCTS WERE MANUFACTURED ADJACENT TO ALMOST EVERY COLLIERY, USING THE SEGGAR/FIRECLAY MINED ALONGSIDE THE COAL



DUKE OF KENT
VISITS GREEN-
HEAD SPORTS
FIELD WORK
PROJECT 1938

Greenhead
brickyard in the
background





GROUPS OF COAL MINERS AT THE DRIFT ENTRANCES (BANK)
The use of naked flame oil lamps, known as 'Midgies,' was widespread in this region

COKE WORKERS AT BEECHBURN COLLIERY
COKE OVENS c. 1850s





WEST BEECHBURN (HARGILL) COLLIERY BANNER ON DISPLAY OUTSIDE THE AUSTRALIAN HOTEL

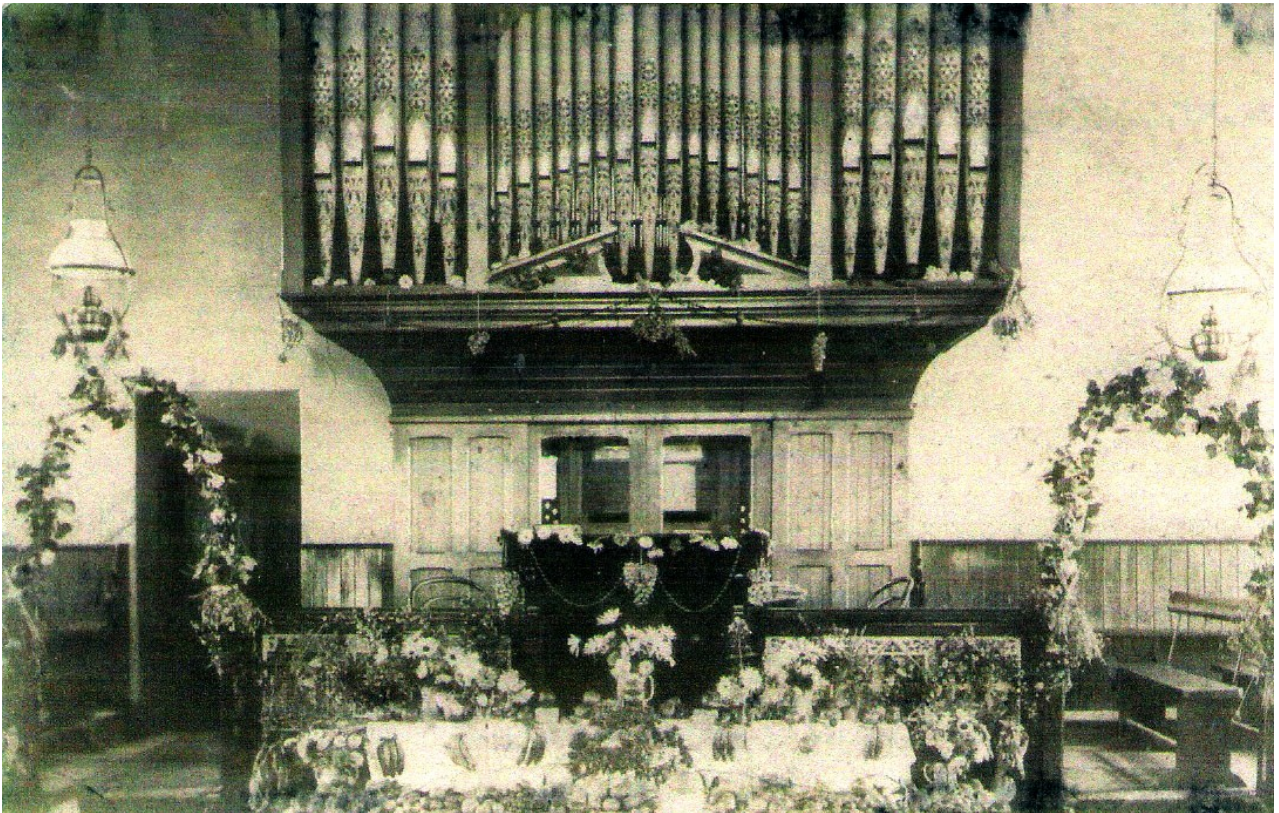


RAMAR'S
CLOTHING
FACTORY

DEMOLISHED
MARCH 2006
MAKING ROOM
FOR NEW
HOUSING

HOWDEN
WALKING
CLUB TRY
THE
NEW
FOOTBRIDGE
OVER THE
BEECHBURN
AT
DENE BRIDGE
2006





INTERIOR OF TRINITY METHODIST CHAPEL, HIGH STREET. ORGAN, PULPIT & CHOIR STALLS DECORATED FOR HARVEST FESTIVAL c. 1920



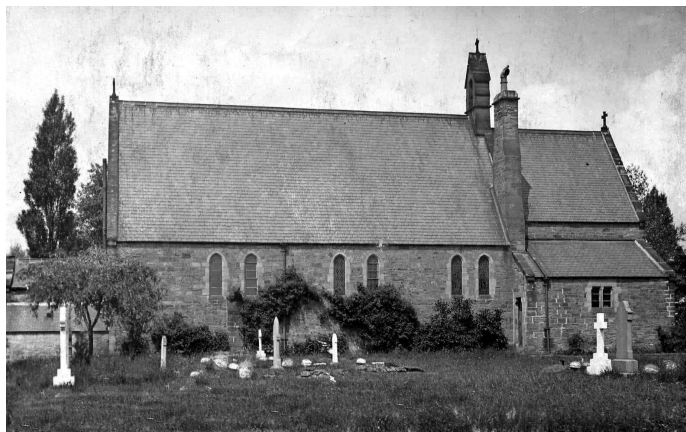
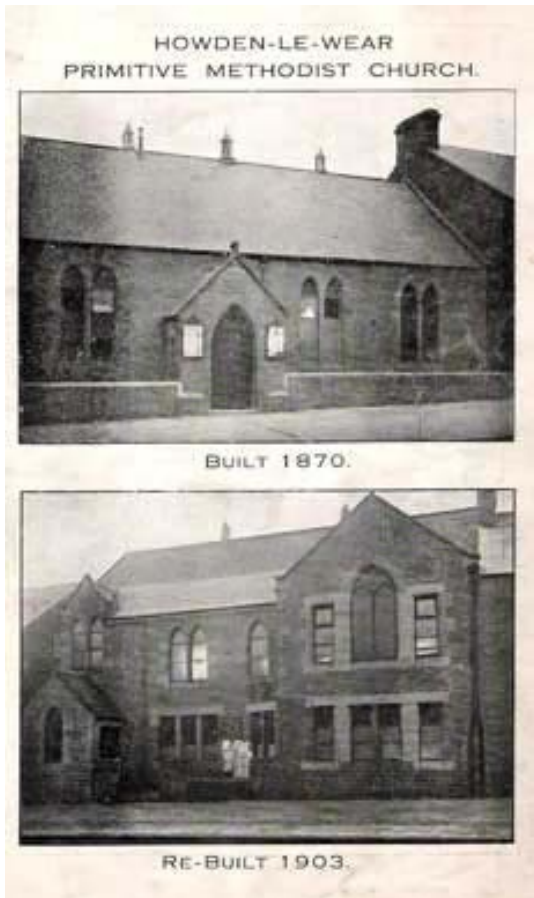
HOWDEN-LE-WEAR TRINITY METHODIST SUNDAY SCHOOL PUPILS & TEACHERS c. 1950



METHODIST YOUTH CLUB REUNION WITH Rev. & Mrs BRADY



BRIDGE STREET METHODIST CHAPEL CONCERT c.1955



St MARY'S CHURCH 1869 - 2008
Rear view before the belfry was moved from east to west



SPIRITUALIST CHURCH
AT
DENESIDE c.1960
Also used by the scouts,
guides, cubs & brownies



HOWDEN-LE-WEAR ORIGINAL VICARAGE & GARDENS, HARGILL ROAD.
HARGILL COLLIERY PIT HEAPS IN THE BACKGROUND



St MARY'S
CHURCH
1869 - 2008

FOLLOWING A
FINAL COM-
MEMORATIVE
MASS ON
SUNDAY 27th
JANUARY 2008
THE CHURCH
OFFICIALLY
CLOSED



St MARY'S CHURCH INTERIOR DECORATED FOR A WEDDING PRIOR TO CLOSURE



HOWDEN SCHOOL CONCERT c.1960

HOWDEN-LE-
WEAR OLD
TIME DANCE
CLUB
CHRISTMAS
DINNER





A FAMILIAR FIGURE UP TO ABOUT 1960 WOULD HAVE BEEN THE 'NETTY CLEANER' (SCAVANGER MAN)



VILLAGE
CHARACTERS

Left

CLOGGY
JACKSON &
GEORGE
PATTON

Right

Mrs CALVERT
with her dogs
&
TOMMY
LUMLEY





HOWDEN
FOOTBALL
TEAM IN THE
1960s



NORTH BEECHBURN CRICKET TEAM WITH SEVERAL HOWDEN MEMBERS



HOWDEN-LE-WEAR WORKMEN'S CLUB, RUMBY HILL BANK c.1920



SUNNYDENE
LODGE,
FORMER
WORKMEN'S
CLUB,
PRIOR TO
DEMOLITION
AND NEW
HOUSING
DEVELOPMENT
c.2005



HOWDEN DANCE CLUB FANCY DRESS PARTY



THE 'BAND WAGON' WITH HARRY MANGLES, LES LEE & Co PLAYING AT A CARNIVAL



CORONATION PARADE IN HARGILL ROAD 1953

VALLEY TERRACE CARNIVAL 1953





W.I. LADIES' FANCY DRESS PARADE AT HOWDEN CORONATION CARNIVAL June 2nd 1953



VILLAGE CARNIVAL CLOWNS



VILLAGE CARNIVALS
POPULAR IN THE 1970s & 80s.



HOWDEN BECK FLOODS 30th OCTOBER 2000 LED INDIRECTLY TO THE DEMOLITION OF THESE AGED PEOPLE'S BUNGALOWS IN HARGILL HAVEN



HARPS - HOWDEN ASSOCIATION RURAL PLAY SCHEME - OPENED IN 1987 BUT REPEATED VANDALISM ATTACKS SOON CLOSED IT DOWN



HAROLD MOORE (HEADMASTER)
WITH INFANT CHILDREN
c.1960

HOWDEN-LE-WEAR PRIMARY SCHOOL

POLLY GARDINER WITH HER CLASS OF INFANTS





PETER APPLEBY (HEADMASTER) WITH INFANTS AT BROUGHAM'S FARM 1974



FROM 1861 THE FIRST DAY SCHOOL WAS HELD IN THE WESLYAN METHODIST SCHOOLROOMS, HIGH STREET, BEFORE THE BOARD SCHOOL OPENED IN HARGILL ROAD IN 1887



HOWDEN SCHOOL GOVERNORS AND STAFF 1999 ON THE 25th ANNIVERSARY OF THE NEW SCHOOL

ALAN MANGLES
LEADING
HOWDEN
SCOUTS TO THE
CENOTAPH ON
REMEMBRANCE
SUNDAY





ALAN MANGLES
AND
JOE FENWICK
WITH
HOWDEN
SCOUTS



HOWDEN SCOUTS, GUIDES, CUBS AND BROWNIES
PERFORMING THEIR 'GANG SHOW' IN THE W.I. HALL c.1965



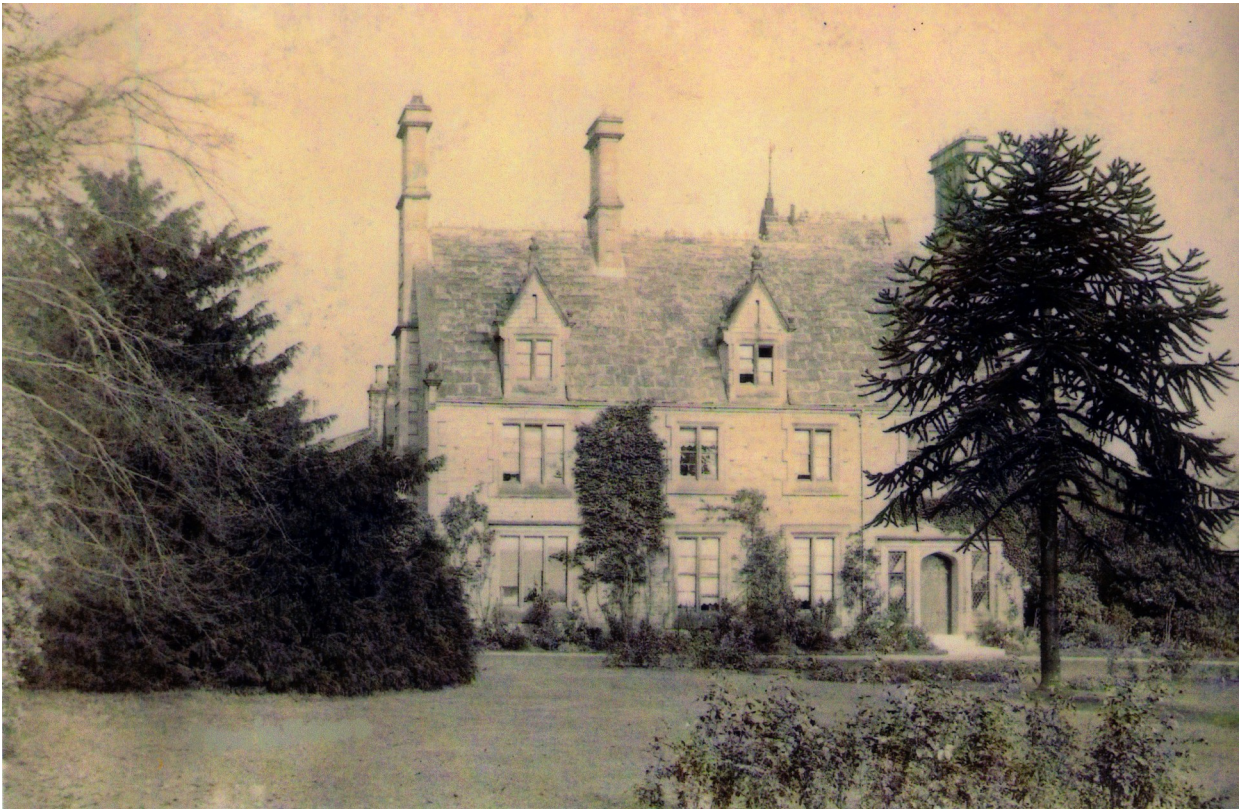
LADIES
MODEL-
LING FOR
JESSIE'S
FASHIONS



FORMER W.I. HALL, HARGILL ROAD, A POPULAR VENUE FOR DANCES, WEDDINGS etc.
School dinners were prepared and served here to generations of children



LADIES OF THE W.I.



SMELT HOUSE LATTERLY FIR TREE GRANGE

Sold in 1953 by Mrs Carew-Shaw (nee Fryer) to Dr F. Lishman, then to D.C.C for a Home for Unmarried Mothers, later a Probation Hostel, now in private ownership once more



FRYER
FAMILY
David's
christening
1938

Residents of
Smelt House
until 1953



BEFORE THE INTRODUCTION OF ELECTRICITY
TOMMY TARN'S OIL CART DELIVERED LAMP OIL HOUSE TO HOUSE



BRIDGE END
GARAGE
REPAIR
WORKSHOPS
AT THE REAR
OF BRIDGE
STREET,
NEAR GARDEN
PLACE

Originally owned
by Jos Calvert,
then Findlay &
Wilks

Petrol was
served over the
pavement from
the front shop in
Bridge Street



HAY TIME c.1950

Left AT HARGILL FARM ON THE HAY BOGIE

Above AT FOLD HOUSE FARM 1956 RALPH HORN ON THE
TRACTOR AND ALBERT WELLS WITH HORSE & RAKE



BETTY COOPER AND EMMA ELLIOT HAYMAKING AT HARGILL FARM



THRESHING DAY AT FIR TREE WITH JACK BRADWELL'S STEAM TRACTION ENGINE



BRITISH
WORKMEN'S
HALL
(CRAIG HALL)
IN
STATION
ROAD
Opened in
1876 with
billiards and
snooker
tables,
reading room
and village
cinema
upstairs

Later renamed
Craig Hall and
used by
scouts &
guides

For a while
it was The
Blue Lagoon
nightclub



HILL 60

All that remains of the once extensive coal mine workings in Constantine hillside

Soldiers returning from the First World War named the pit heap 'Hill 60' after a battlefield site in Northern France